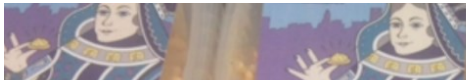




Each batch of Queen Charlotte's Pimento Cheese Royale is handcrafted in our brand new production facility in our hometown of Charlotte, NC. After starting with a cream cheese base (and less mayonnaise than the average pimento cheese), we grate, blend, and package each and every tub by hand. In Her Majesty's Royal Opinion, this most delectable of concoctions is the finest pimento cheese man has ever conjured.



Queen Charlotte Cheese

| <u>Item</u> | <u>Case Pack</u> | <u>Size</u> | <u>UPC</u> | <u>Description</u> |
|-------------|------------------|-------------|--------------|-------------------------------------|
| R00010 | 3 | 10oz | 866079000101 | Pimento Cheese Royale |
| R00011 | 3 | 10oz | 866079000118 | Her Royal Hotness Pimento Cheese |
| R00012 | 3 | 10oz | 866079000125 | Black and Bleu Blood Pimento Cheese |
| R00013 | 3 | 10oz | 866079000132 | Baconham Palace Pimento Cheese |
| R00019 | 3 | 10oz | 866079000194 | Crown The Hatch Pimento Cheese |

